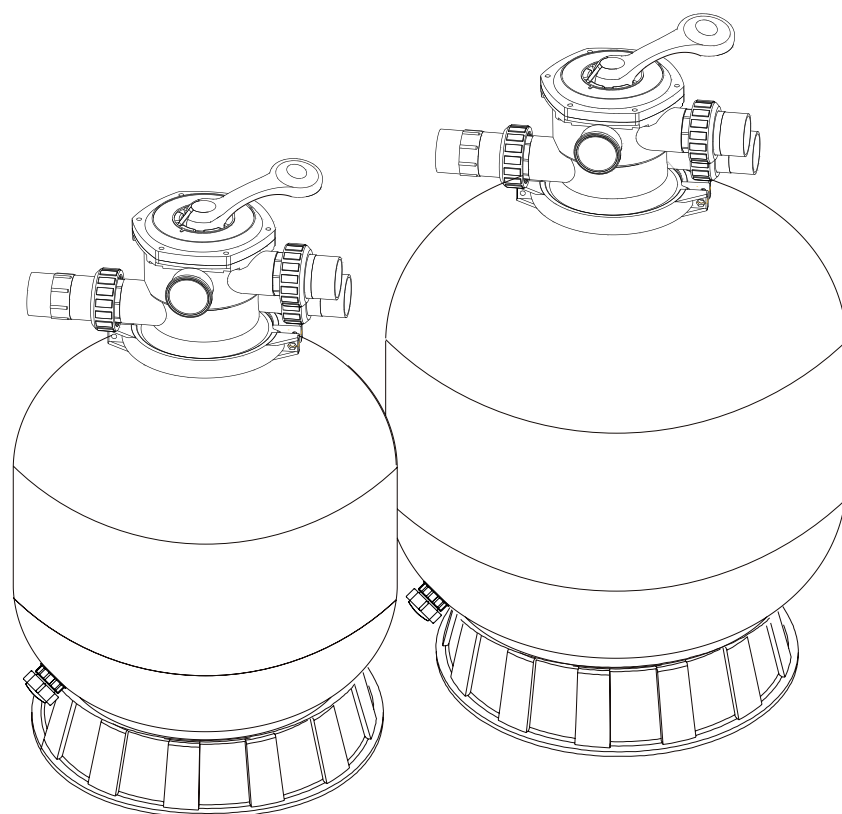


Sand filtration with Six-way valve

(Models: P350, P450, P500, P650)



INSTALLATION
AND USER GUIDE



VERZE 31. 10. 2017 / REVIZE: 31. 10. 2017

EN

Content

1.	Description of the functions of the filter container and six-way valve	3
2.	Installation	3
3.	Main Dimensions	4
4.	Installation/starting the filtration	5
5.	List of filtration's components	6
6.	List of six-way valve components	7
7.	Functions of the valve and meaning of its positions	8
8.	Warranty conditions	10

Thank you for choosing our product and trusting our company. To help you to get the maximum pleasure from using this product, please read these instructions carefully before use and strictly follow the user's manual to prevent damage to the device or unnecessary injuries.

Description of the functions of the filter container and six-way valve

1.

The device is used for the maintenance and cleaning of swimming pool water. It consists of a custom filter container and six-way valve. The water is cleaned by the flow of the water through the filter container filled with filtration media using a circulation pump. The most widely used filter medium is silica sand. Untreated pool water is sucked through the circulation pump and subsequently extruded through the technology (pipes, fittings, valves) and the six-way valve into its own filter container. Part of the six-way valve is a pressure gauge which is used for visual inspection of impurities in the filter medium. The water passes through the filter medium, where the impurities are trapped. Purified water drains into the technology through pipes, fittings and circulation nozzles back into the pool. This process of cleaning of the pool water is highly efficient, smooth and provides a complete recirculation of the pool water.

Installation

2.

If you do not use a professional service to install the device, we recommend a filter device mounted as close as possible to the swimming pool shell, however, at least up to a distance of about 5 m. If it is necessary to install the filter device at a greater distance than 5 m, contact an authorized service centre. The device should be placed on a hardened level surface; we recommended a concrete slab with a minimum thickness of 10 cm. For hassle-free maintenance and service we recommended installing the entire device under the level of the pool water. Proprietary technology (pipes), both suction and discharge, must be closed by shut-off valves. We recommend also making the drainage pipes in the place of installation of the device. Drainage pipes can be used for operation and maintenance of the device.

Filling the filter container with filtration media: Before filling the filter container place the plastic base in the chosen place. At the bottom of the container mount the complete drainage valve and tighten it.

Six-way valve:

1. Remove the clamp flange, and gently pull upwards to remove the six-way valve. Remove the rubber seal from the groove at the neck of the sand container.
2. Cover the central tube with a plastic cover, or other suitable means and slowly pour the filter medium in the necessary quantity (about 3/4 of the sand container). When pouring the media be careful to avoid misalignment of the central tube. Straighten the medium in the container. Remove the plastic cover from the central tube.
3. Carefully clean the groove in the neck of the sand container. Remount the six-way valve including the rubber seal. Apply an appropriate water grease on the seal, we recommend silicon grease.
4. Attach the valve, deploy carefully through the opening in its lower part to the central tube. When attaching the valve rotate it slightly. Replace the flange clamp and tighten the screws.
5. Install the pressure gauge. Screw down the pressure gauge including the seals, to which apply grease. Tighten the pressure gauge very carefully and gently screw into the inner plastic fittings.
6. Attach the connecting hose to the circulation pump discharge and to the six-way valve outlet moulding marked PUMP.
8. We recommend that you also connect the six-way valve outlet marked WASTE to a suitable drainage pipe.
9. Irrigate the technology, and check the tightness of all the technology components. If you find water leaks, tighten the connections. It should be noted that all fittings and connections are made of plastic. In the case of excessive tightening of the connecting parts they could be damaged, we recommend you refer to installation experts.

3.

Main Dimensions

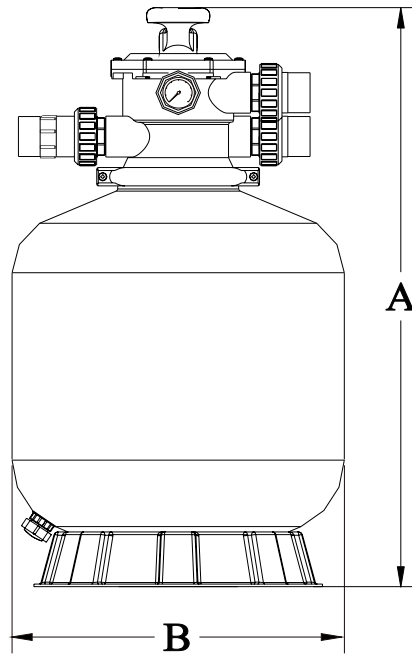


Table of dimensions

Model	Height A (mm)	Diameter B (mm)	Set flow rate (m ³ /h)	Sand (kg)
P350	726	335	4	20
P450	814	455	6	45
P500	845	535	9	85
P650	950	635	12	145

Installation/starting the filtration

4.

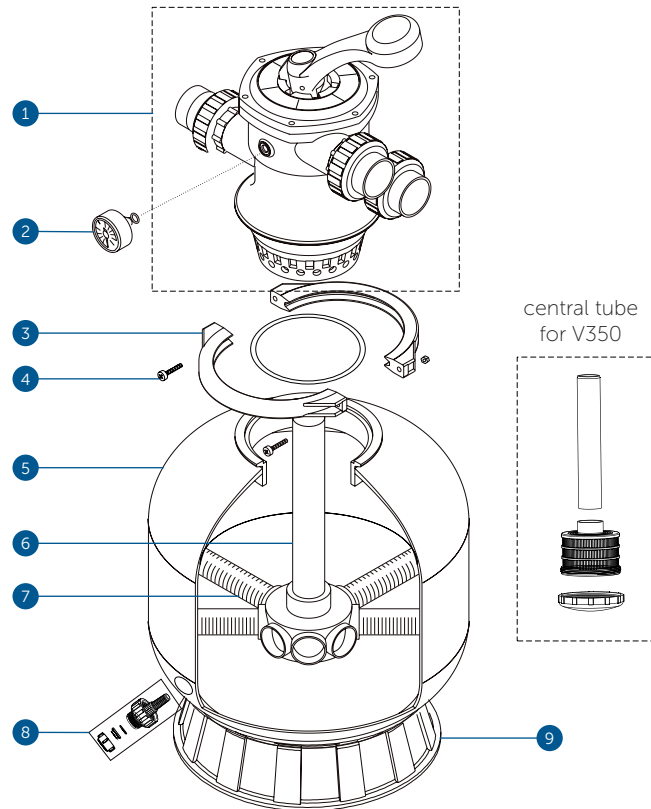
Before any handling of the six-way valve, especially when switching valve functions, the circulation pump must not be running!

1. Press the lever of the six-way valve downwards and turn it in the position BACKWASH. You should note that when using this valve function a considerable amount of water will flow from the outlet!
2. Fill the pump with water up and turn it on according the instructions (make sure that all suction and reversing pipes are open) to fill the filtration container with water. When the water is running out through the WASTE hose, the system is fully filled with water. Before selecting any other function, you need to thoroughly rinse the new filter media. Rinsing media may take several minutes; you should count with the loss of pool water. Stop the Rinsing function as soon as clean water flows through the outlet - observe the clean water in the transparent part of the pipeline – aperture.
3. Turn the pump off and set the valve to the position RINSE. Start the pump and let it run for about half a minute to one minute until the water in the aperture is not clean. Turn the pump off, set the valve back to the FILTER position and re-activate the pump. The filtration is now running in the standard filtration mode and filters off the dirt from the pool water.
4. Check that the water doesn't leak from the system and the filter and if necessary, tighten the connections, screws or nuts.
5. After some time of the filtering of the pool water the pressure gauge will display a higher pressure, and this means that the filter medium is clogged with impurities. In this case it is necessary to perform a rinsing. When rinsing the filter medium, proceed in the same way as described above, including the settling function. Perform the rinsing when the pressure gauge shows a pressure of about 1.7-1.9 bar.

Note: During the first cleaning of the new pool water it might be necessary to rinse the filter medium more often because this water contains more dirt.

5.

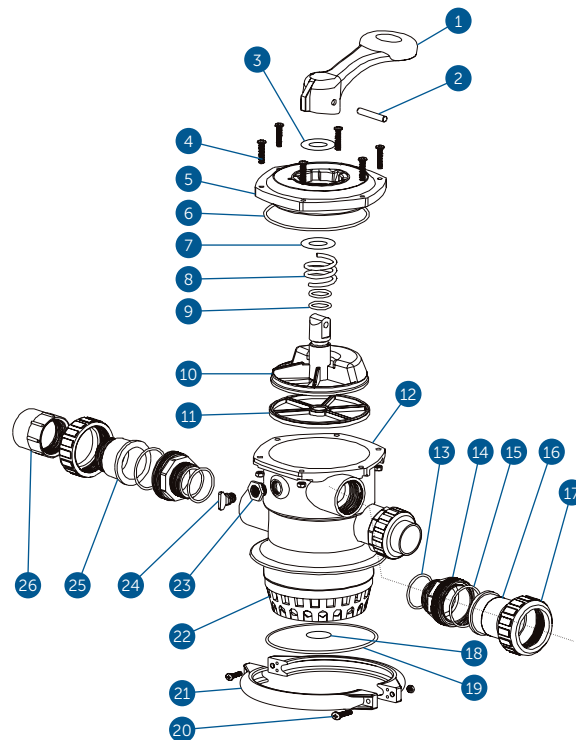
List of filter components



Item	Product Description	Product code
1	six-way valve	BXNDFN048
2	pressure gauge with O-ring	BXNDFN009
3	flange clamp	BXNDFN027
4	screw with nut	
5	filtration container to P450 and FSP450	BXNDFN011
	filtration container to P500 and FSP500	BXNDFN012
6	central tube - P350	BXNDFN038
	central tube - P400	BXNDFN039
	central tube - P450	BXNDFN040
	central tube - P500	BXNDFN041
	central tube - P650	BXNDFN042
7	water drainage tube - P400-P450	BXNDFN043
	water drainage tube - P500-P700	BXNDFN044
	water drainage tube - SP450	BXNDFN045
	water drainage tube - SP500-SP700	BXNDFN046
8	drainage valve	BXNDFN050
9	stand under container - P350	BXNDFN019
	stand under container - P400-P450	BXNDFN020
	stand under container - P500-P750	BXNDFN021

List of six-way valve components

6.



Item	Product Description	Product code
1	lever	BXNDFN014
2	lever pin	
3	washer	BXNDFN015
4	screw with nut, cover	
5	set cover	BXNDFN007
6	O-ring cover	
7	washer	BXNDFN016
8	spring	BXNDFN022
9	revolving wheel O-ring	BXNDFN032
10	revolving wheel	BXNDFN025
11	Spider - inner six-way valve seal (individual functions)	BXNDFN031
12	body-diffuser	BXNDFN030
13	threaded coupler O-ring	BXNDFN028
14	threaded coupler pipe fitting	BXNDFN028
15	threaded coupler O-ring	BXNDFN028
16	threaded coupler adaptor	BXNDFN028
17	threaded coupler cap nut	BXNDFN028
18	O-ring central tube	BXNDFN036
19	O-ring filter	BXNDFN035
20	screw with nut, terminal	
21	flange clamp	BXNDFN027
22	6-way valve diffuser - Brilix	BXNDFN001
23	nut, stopper (threaded part designed for mounting pressure gauge)	BXNDFN024
24	stopper with O-ring (use in case of pressure gauge failure)	BXNDFN054
25	waste aperture	BXNDFN052
26	connector	BXNDFN037

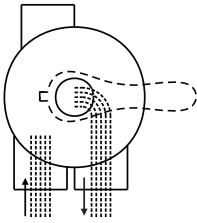
7.

Functions of the valve and meaning of its positions

Valve position	Functions
filtration	filtration and suction
backwash	cleaning the filtration media (reverse flow)
rinse	cleaning the remaining impurities from the filtration after the backwash
waste	lowering the pool water level, suction
recirculation	circulation of water
closed	valve closed

FILTRATION

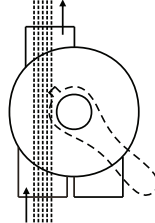
waste



inlet outlet

WASTE

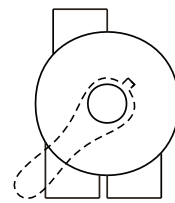
waste



inlet outlet

CLOSED

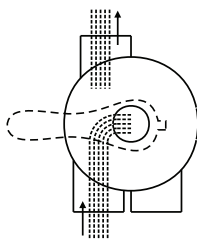
waste



inlet outlet

BACKWASH

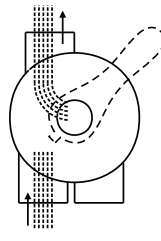
waste



inlet outlet

RINSE

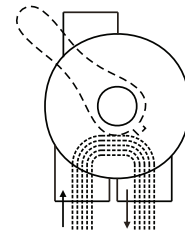
waste



inlet outlet

RECIRCULATION

waste



inlet outlet

Explanation of functions:

FILTER: Normal operation during cleaning and maintenance of the pool water, purified water passes through the filter medium.

BACKWASH: Cleaning the filter media. With this function, as compared with the filtering function, the direction of the flow of pool water is reversed through the filtration media, the impurities are rinsed out of the container. The period of water purification depends on the degree of impurities in the filter media and can take several minutes. Before running this function it is recommended to fill up at about 1m³ of water to the pool.

Caution: This function is necessary to ensure the drainage of the six-way valve (see Installation / startup).

RINSE: Thorough cleaning of the filtration media, the flow of water is the same as with the filtering.

Caution: When using this function it is necessary to ensure the drainage of water from the six-way valve (see Installation / startup).

WASTE: With this function it is possible to dynamically and rapidly drain the swimming pool water. The drained water is not lead through a filter medium. This function can be used for pool maintenance, while vacuuming. This method of vacuuming is recommended for use in the removal of larger quantities of impurities which settle on the bottom of the swimming pool shell, for instance following the use of flocculating products (flocculants).

Caution: When using this function it is necessary to ensure the drainage of the six-way valve (see Installation / startup).

RECIRCULATION: With this function, the water is guided outside of the filter medium and can be used for filling the filtration system up; any air is displaced by this system.

CLOSED: Water does not flow through the six-way valve. It is used for example in case of the necessity to disassemble the circulation pump technology.

Caution: When using this function the circulation pump must not be running!!

Recommendation: During the winter shutdown, set the lever of the six-way valve to any intermediate position to avoid excessive wear and tear on internal seals of the Spider. Never switch on a feature of the six-way valve when the pump is running!

CAUTION: If there is a faulty valve, contact an authorized service centre. We do not recommend removing the valve yourself. Dismantling of the valve must be done by a person with technical training from the manufacturer. If, despite the aforementioned, you decide to dismantle the valve, proceed with caution, there is a risk of injury.

WARNING

- Turn the pump off before changing the position of the six-way valve
- Never operate this device without water.
- Never connect the filter directly to the water source from the water supply system. The water pressure from the water supply system might be much higher than the maximum pressure of the filter.
- Never turn the pump on if the position on the six-way valve is set to the closed position or if pipes of the circulation system are impassable. There is a risk of a higher pressure than the working pressure which can lead to the damage, cracking, separation of the six-way valve cover that might cause injuries or damage to property.
- It is not permitted to sit or place a load on the device.
- Do not clean the filter cover or the filter container with a solvent, it could damage its surface (tarnishing, transparency, etc.)
- Clean the pump hair filter and the skimmer basket regularly in order to prevent damage to the pump and ensure the proper operation of the system.
- Do not unscrew flanged connectors if the pump is running.
- As all connectors are equipped with seals there is no need to screw the nuts too tightly, it could damage the plastic components.

8.

Warranty conditions

Warranty conditions

The warranty conditions are governed by the commercial and warranty conditions of your supplier.

Safe liquidation of the product at the end of its useful life

Once the product's useful life has ended, please ensure its ecological liquidation by a specialised company.

Complaints and Service

Claims are governed by the relevant acts on consumer protection.

In the event of any irreparable defects, please contact your supplier in writing.

Date

	Supplier
--	----------

Thank you
for using ALBIXON
products



ALBIXON

export@albixon.com
www.ALBIXON.com

Note that the photos used in the manual are illustrative only. Printing and typesetting errors reserved.