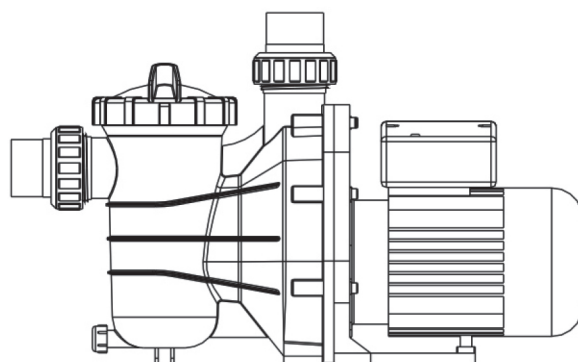
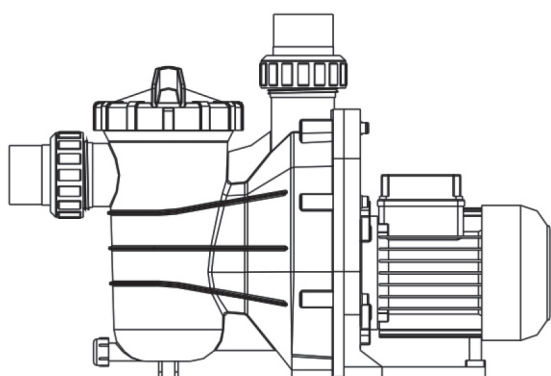


# Swimming pool pump FXP



## INSTALLATION AND USER GUIDE



VERZE 31. 8. 2017 / REVIZE: 31. 8. 2017

EN

Thank you for choosing our product and trusting our company. To help you to get the maximum pleasure from using this product, please read these instructions carefully before use and strictly follow the user's manual to prevent damage to the device or unnecessary injuries.

# 1.

## Installation

The pump can only be installed and connected by qualified, authorized personnel.

### IMPORTANT:

Electricians please note: The pump must be wired to the main power supply through an approved and correctly rated contactor.

### Placing of the pump:

- must be solid, level, firm, vibration free.
- must allow use of a short, direct suction pipe (to reduce friction losses do not install the pump higher than 3 m above the water level)
- must allow installation of shutoff valves in the suction and discharge pipes
- must have adequate floor drainage in order to prevent flooding
- must be protected from excessive moisture
- must allow full access for maintenance of the pump and pipes

### NOTICE:

The pump suction and discharge connections have moulded threaded stoppers, DO NOT try to screw the pipe in beyond these stoppers.

# 2.

## Operation

### CAUTION



#### **Hazardous suction.**

It can capture the hair or body parts and cause serious injury or death. Do not block the suction.

- NEVER run the pump dry!  
Running the pump dry may damage seals, causing leakage and flooding!
- TURN OFF THE PUMP before proceeding.
- CLOSE SHUTOFF VALVES in suction and discharge pipes.
- RELEASE ALL PRESSURE from the pump and pipe system.
- NEVER tighten or loosen screws while the pump is running.
- Do not block the pump suction! To do so with the body may cause severe or fatal injury. Children using the pool must ALWAYS be under close adult supervision!

BEFORE STARTING FILL THE PUMP WITH WATER.

### Irrigating the pump

- Release all air from the filter and pipe system: see filter instruction manual.
- In a flooded suction system (water source higher than pump) the pump will prime itself when suction and discharge valves are opened.
- If pump is not in a flooded suction system, unscrew and remove the sump cover; fill the sump and pump with water.
- Clean and check the ring and reattach to the sump cover.
- Reattach the sump cover on the sump and turn to the right to tighten.

**NOTICE:** Tighten the sump cover by hand only. The pump should now be full of water. The priming time will depend on the vertical length of suction elevation and horizontal length of the suction pipe.

## Routine Maintenance

3.

The only routine maintenance needed is inspection/cleaning of the sump basket. Debris or rubbish that collects in the basket will choke off the water flow through the pump. Follow the instructions below to clean the sump:

1. Turn off the pump, close the shutoff valve in the suction and discharge pipes, and release all pressure from the system before proceeding.
2. Unscrew the sump cover (turn to the left).
3. Remove the strainer basket and clean it. Ensure that all the openings in the basket are clear, rinse the basket with water and place it in the sump with the large opening at the pipe connection port (between the ribs provided). If the basket is placed backwards, the cover will not fit on the sump body.
4. Clean and inspect the cover ring and place on the sump cover.
5. Clean the ring groove on the sump body and fit the cover. To help keep the cover from sticking, tighten by hand only.
6. Priming the pump (see priming instructions above).

## Service and spare parts

4.

For all service needs please contact your sales representative or dealer as his / her knowledge of the equipment makes him / her the most qualified source of information. Order all spare parts from your dealer. When ordering spare parts give the following information:

1. nameplate data or serial number on the label.
2. description of the part.

# 5.

## Troubleshooting

### MOTOR DOES NOT START

1. Disconnect the switch or circuit breaker
2. Fuses blown or thermal overload is open.
3. Locked motor shaft.
4. Motor coils burned out.
5. Defective starting switch inside a single phase motor.
6. Disconnected or defective wiring.
7. Low voltage.

### LOW PUMP CAPACITY

1. Valve in suction or discharge pipe partly closed.
2. Suction or discharge pipe partly clogged.
3. Suction or discharge pipe too small.
4. Clogged basket in skimmer or hair in the strainer.
5. Dirty filter.
6. Impeller clogged.

### PUMP DOES NOT ACHIEVE FULL SPEED

1. Low voltage.
2. Pump connected to wrong voltage.

### HIGH PUMP PRESSURE

1. Discharge valve or inlet fittings are closed too much.
2. Return lines are too small.
3. Dirty filters.

### MOTOR OVERHEATS (protector trips)

1. Low voltage
2. Motor coils connected for wrong voltage on dual voltage model.
3. Inadequate ventilation.

### NOISY PUMP AND MOTOR

1. Clogged basket in skimmer or hair in strainer.
2. Worn motor bearings.
3. Valve in suction pipe is partly closed.
4. Suction pipe is partly clogged.
5. Vacuum hose is clogged or too small.
6. Pump is not installed properly.

### PUMP DOES NOT SUPPLY ANY WATER

1. Pump is not primed.
2. Loose valve in suction or discharge pipes.
3. Leakage or air in the suction system.
4. Impeller is clogged.

### AIR BUBBLES AT INLET FITTINGS

1. Leakage of air into suction pipe at the connection or valve stem.
2. Cover seal of hair strainer is clogged.
3. Low water level in the pool.

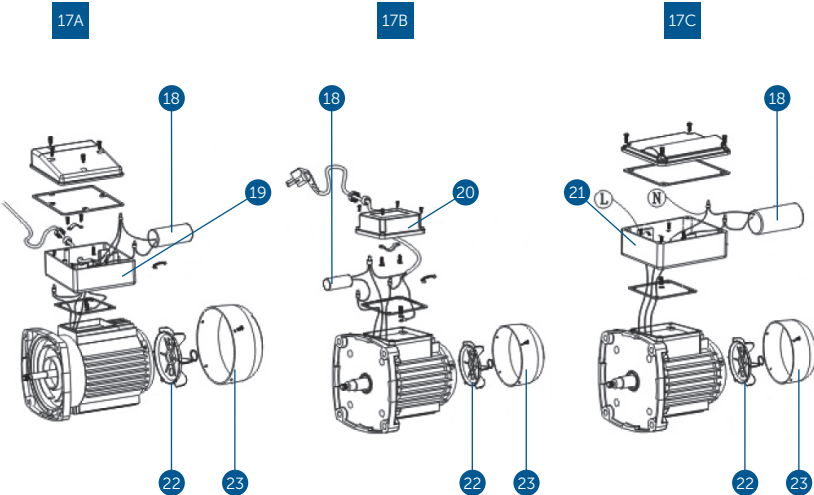
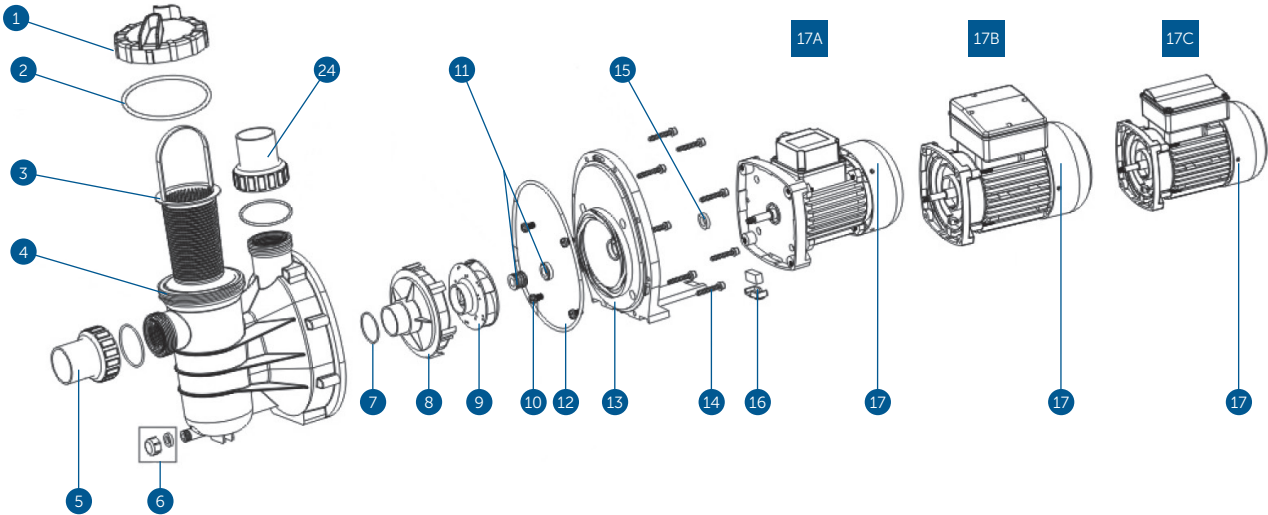
### LEAKAGE OF WATER AT SHAFT

1. Shaft seal needs replacing.

**NOTE:** If the recommendations in the troubleshooting section of this manual do not solve your particular problem, please contact your local dealer for service.

# Pump parts for model FXP

# 6.



Item	Part no.	Product description	Qty	Product code
1	01041025	transparent cover	1	BXNDFC090
2	02011074	O-ring for cover	1	BXNDFC065
3	89022401	basket with handle	1	BXNDFC022
4	01021064	FXP pump pre-filter	1	BXNDFC058
5	89280105	threaded coupler 1.5"	2	BXNDFC052
6	89022402	drainage stopper with O-ring	1	BXNDFC094
7	02011004	O-ring on diffuser	1	
8	01111014	diffuser	1	BXNDFC007
9	01311015	impeller FXP150 (220V/50Hz)	1	BXNDFC078
	01311016	impeller FXP250 (220V/50Hz)	1	BXNDFC079
	01311017	impeller FXP370 (220V/50Hz)	1	BXNDFC080
	01311018	impeller FXP500 (220V/50Hz)	1	BXNDFC081
	01311019	impeller FXP750 (220V/50Hz)	1	BXNDFC082
	01311014	impeller FXP900 (220V/50Hz)	1	
	01311023	impeller FXP150 (220V/60Hz)	1	
	01311024	impeller FXP250 (220V/60Hz)	1	
	01311015	impeller FXP370 (220V/60Hz)	1	
	01311016	impeller FXP500 (220V/60Hz)	1	
	01311017	impeller FXP750 (220V/60Hz)	1	
	01311018	impeller FXP900 (220V/60Hz)	1	
	01311023	impeller FXP150 (110V/60Hz)	1	
	01311024	impeller FXP250 (110V/60Hz)	1	
	01311015	impeller FXP370 (110V/60Hz)	1	
	01311016	impeller FXP500 (110V/60Hz)	1	
	01311017	impeller FXP750 (110V/60Hz)	1	
	01311018	impeller FXP900 (110V/60Hz)	1	
10	89022403	screw M8*16 with washer	4	
11	04015002	mechanical seal ½"	1	
12	02011090	O-ring for flange	1	BXNDFC070
13	01021065	FXP pump flange	1	BXNDFC034
14	03011035	screw M6*30	8	
15	02011156	motor ring washer for FXP150, FXP250	1	
	02011153	motor ring washer for FXP370-FXP900	1	
16	89022404	motor holder	1	
17	89022109	Motor FXP 150 (220V/50Hz)	1	
	89022110	Motor FXP 250 (220V/50Hz)	1	
	89022105	Motor FXP 370 (220V/50Hz)	1	
	89022106	Motor FXP 500 (220V/50Hz)	1	
	89022107	Motor FXP 750 (220V/50Hz)	1	
	89022108	Motor FXP 900 (220V/50Hz)	1	
	89022201	Motor FXP 150 (220V/60Hz)	1	
	89022202	Motor FXP 270 (220V/60Hz)	1	
	89022203	Motor FXP 370 (220V/60Hz)	1	
	89022204	Motor FXP 500 (220V/60Hz)	1	
	89022205	Motor FXP 750 (220V/60Hz)	1	
	89022206	Motor FXP 900 (220V/60Hz)	1	
	89022305	Motor FXP 150 (110V/60Hz)	1	
	89022306	Motor FXP 250 (110V/60Hz)	1	
	89022301	Motor FXP 370 (110V/60Hz)	1	
	89022302	Motor FXP 500 (110V/60Hz)	1	
	89022303	Motor FXP 750 (110V/60Hz)	1	
	89022304	Motor FXP 900 (110V/60Hz)	1	

Item	Part no.	Product description	Qty	Product code
18	04016032	capacitor for pump FXP150	1	
	04016033	capacitor for pump FXP250	1	
	04016028	capacitor for pump FXP370	1	
	04016019	capacitor for pump FXP500	1	
	04016021	capacitor for pump FXP750	1	
	04016030	capacitor for pump FXP150	1	
	04016031	capacitor for pump FXP250	1	
	04016009	capacitor for pump FXP370	1	
	04016010	capacitor for pump FXP500	1	
	04016012	capacitor for pump FXP750	1	
	19	89022110	cable box for FXP370-FXP900 pump	1
20	89022111	cable box for FXP150-FXP250 pump	1	
21	89021505	cable box for FXP370-FXP500 pump	1	
	89022307	cable box for FXP750-FXP900 pump	1	
22	01031026	cooling valve for FXP150-FXP250 pump	1	
	01031027	cooling valve for FXP370-FXP900 pump	1	
23	01031011	fan cover for FXP150-FXP250 pump	1	
	01031010	fan cover for FXP370-FXP900 pump	1	
24	02011104	O-ring	2	

## Warranty conditions

# 7.

### Warranty conditions

The warranty conditions are governed by the commercial and warranty conditions of your supplier.

### Safe liquidation of the product at the end of its useful life

Once the product's useful life has ended, please ensure its ecological liquidation by a specialised company.

### Complaints and Service

Claims are governed by the relevant acts on consumer protection.

In the event of any irreparable defects, please contact your supplier in writing.

Date .....

Supplier

Thank you  
for using ALBIXON  
products



**ALBIXON**

[export@albixon.com](mailto:export@albixon.com)  
[www.ALBIXON.com](http://www.ALBIXON.com)

Note that the photos used in the manual are illustrative only. Printing and typesetting errors reserved.